



Texas  
Wesleyan  
UNIVERSITY

: UW mubXGHZZProfile



Smaller. Smarter.

## Faculty Profile 2017-2018

School	Full-Time				Part-Time				Combined Total
	Tenured	Tenured Track	Non Tenured	Total FT	Tenured	Tenured Track	Non Tenured	Total PT	
Arts/Letters	26	3	4	33	0	0	40	40	73
Business	10	5	2	17	0	0	11	11	28
Education	13	6	1	20	0	0	18	18	38
Health Professions	5	5	9	19	0	0	14	14	33
Library	3	3	1	7	0	0	0	0	7
Provost Office	2	0	0	2	0	0	0	0	2
Developmental Programs	0	0	5	5	0	0	2	2	7
Natural/Social Sciences	20	10	3	33	0	0	18	18	51
<b>Total</b>	<b>79</b>	<b>32</b>	<b>25</b>	<b>136</b>	<b>0</b>	<b>0</b>	<b>103</b>	<b>103</b>	<b>239</b>

*The number of full time faculty includes those with administrative rank, such as Provost Office, Library, and Developmental Programs  
Source: Human Resources faculty data October 2017*



## Faculty Profile 2017-2018

Full Time Faculty by Rank, Contract and Year								
Year	Position	Nine Month			Twelve Month			Grand Total
		Male	Female	Total	Male	Female	Total	
2012	Professor	27	21	48	11	6	17	65
	Associate	21	20	41	5	6	11	52
	Assistant	11	21	32	5	8	13	45
	Instructor	0	6	6	1	4	5	11
	<b>Total</b>	<b>59</b>	<b>68</b>	<b>127</b>	<b>22</b>	<b>24</b>	<b>46</b>	<b>173</b>
2013	Professor	17	12	29	7	3	10	39
	Associate	15	15	30	5	3	8	38
	Assistant	10	19	29	4	6	10	39
	Instructor	1	5	6	0	4	4	10
	<b>Total</b>	<b>43</b>	<b>51</b>	<b>94</b>	<b>16</b>	<b>16</b>	<b>32</b>	<b>126</b>
2014	Professor	18	13	31	5	4	9	40
	Associate	16	17	33	6	5	11	44
	Assistant	12	19	31	5	7	12	43
	Instructor	2	10	12	0	1	1	13
	<b>Total</b>	<b>48</b>	<b>59</b>	<b>107</b>	<b>16</b>	<b>17</b>	<b>33</b>	<b>140</b>
2015	Professor	15	15	30	6	1	7	37
	Associate	17	18	35	5	2	7	42
	Assistant	15	21	36	3	6	9	45
	Instructor	5	6	11	0	1	1	12
	<b>Total</b>	<b>52</b>	<b>60</b>	<b>112</b>	<b>14</b>	<b>10</b>	<b>24</b>	<b>136</b>
2016	Professor	16	15	31	4	1	5	36
	Associate	14	23	37	3	3	6	43
	Assistant	17	17	34	2	2	4	38
	Instructor	4	6	10	0	1	1	11
	<b>Total</b>	<b>51</b>	<b>61</b>	<b>112</b>	<b>9</b>	<b>7</b>	<b>16</b>	<b>128</b>
2017	Professor	16	14	30	8	2	10	40
	Associate	14	24	38	5	4	9	47
	Assistant	17	14	31	1	5	6	37
	Instructor	4	4	8	2	2	4	12
	<b>Total</b>	<b>51</b>	<b>56</b>	<b>107</b>	<b>16</b>	<b>13</b>	<b>29</b>	<b>136</b>

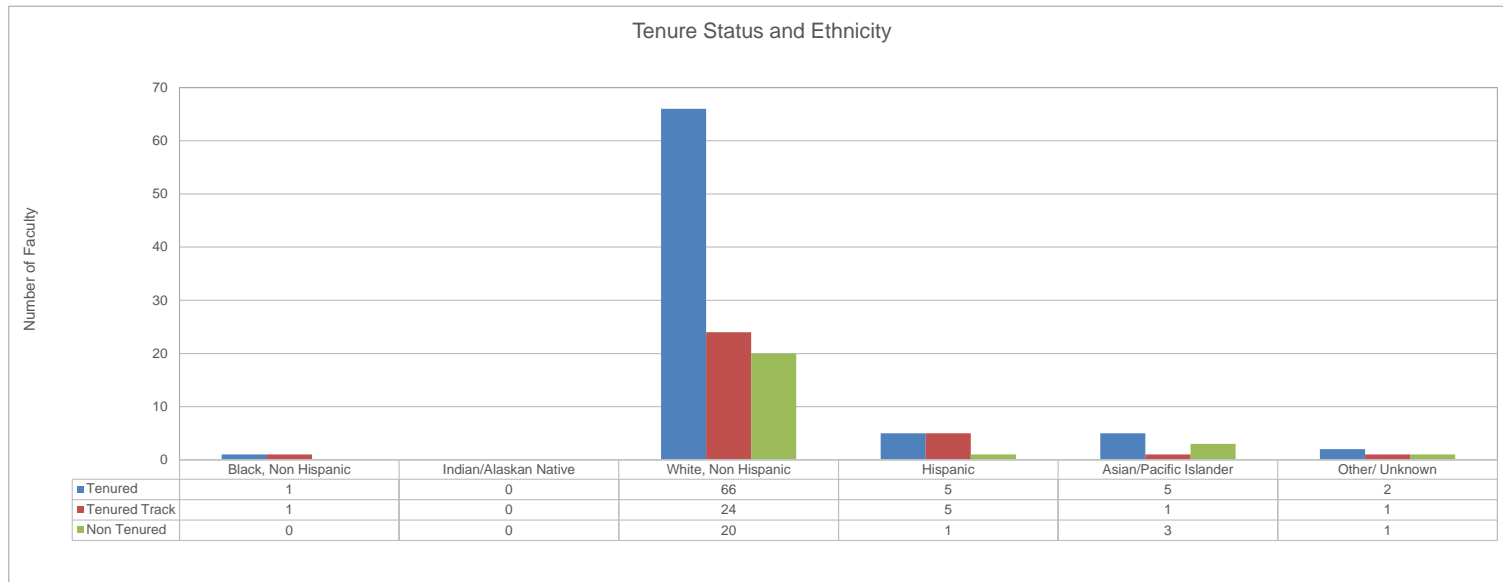


**Faculty Profile**  
**Tenure, Ethnicity and Gender**  
**2017-2018**

**Of Texas Wesleyan University's 135 full-time faculty, 52 percent are female, 48 percent are male, and 22 percent are minority.**

	Black, Non Hispanic	Indian/Alaskan Native	White, Non Hispanic	Hispanic	Asian/Pacific Islander	Other/ Unknown	Campus Total	Female	% Female	Male	% Male	Minority	% Minority
Tenured	1	0	66	5	5	2	79	39	31%	40	32%	11	9%
Tenured Track	1	0	24	5	1	1	32	16	13%	16	13%	7	6%
Non Tenured	0	0	20	1	3	1	25	14	11%	11	9%	4	3%
<b>Total</b>	<b>2</b>	<b>0</b>	<b>110</b>	<b>11</b>	<b>9</b>	<b>4</b>	<b>136</b>	<b>69</b>	<b>51%</b>	<b>67</b>	<b>49%</b>	<b>22</b>	<b>17%</b>

	2017-18	2016-17	2015-16	2014-15	2013-14	2012-13	2011-12	2010-11	2009-10	2008-09	2007-08	2006-07
% Tenured Faculty	58.09%	57.04%	54.74%	60.71%	61.11%	57.23%	51.69%	58.33%	56.69%	61.22%	55.00%	57.30%



Faculty Profile  
 Rank, Tenure, Ethnicity and Gender  
 2017-2018

Headcount	Black, Non Hispanic		American Indian / Alaskan Native		White, Non Hispanic		Hispanic		Asian/Pacific Islander		Other/Unknown		Total	Total	Total	%	
	M	F	M	F	M	F	M	F	M	F	M	F	Total	Female	Male	Minority	Minority
<b>Professor</b>																	
Tenured	1				15	15	3	1	2		1		38	16	22	7	5%
Tenured Track													0	0	0	0	0%
Non Tenured					2								2	0	2	0	0%
<b>Total</b>	<b>1</b>	<b>0</b>	<b>0</b>	<b>0</b>	<b>17</b>	<b>15</b>	<b>3</b>	<b>1</b>	<b>2</b>	<b>0</b>	<b>1</b>	<b>0</b>	<b>40</b>	<b>16</b>	<b>24</b>	<b>7</b>	<b>5%</b>
<b>Associate Professor</b>																	
Tenured					16	20		1	1	2	1		41	23	18	4	3%
Tenured Track						1		1					2	2	0	1	1%
Non Tenured						2	1		1				4	3	0	2	1%
<b>Total</b>	<b>0</b>	<b>0</b>	<b>0</b>	<b>0</b>	<b>16</b>	<b>23</b>	<b>1</b>	<b>2</b>	<b>1</b>	<b>3</b>	<b>1</b>	<b>0</b>	<b>47</b>	<b>28</b>	<b>18</b>	<b>7</b>	<b>5%</b>
<b>Assistant Professor</b>																	
Tenured						1							1	1	0	0	0%
Tenured Track		1			12	9	3			1		1	27	12	15	5	4%
Non Tenured					3	4				1		1	9	6	3	1	1%
<b>Total</b>	<b>0</b>	<b>1</b>	<b>0</b>	<b>0</b>	<b>15</b>	<b>14</b>	<b>3</b>	<b>0</b>	<b>0</b>	<b>2</b>	<b>0</b>	<b>2</b>	<b>37</b>	<b>19</b>	<b>18</b>	<b>6</b>	<b>4%</b>
<b>Instructor</b>																	
Tenured													0	0	0	0	0%
Tenured Track					1			1					2	1	1	1	1%
Non Tenured					4	5			1				10	5	5	1	1%
<b>Total</b>	<b>0</b>	<b>0</b>	<b>0</b>	<b>0</b>	<b>5</b>	<b>5</b>	<b>0</b>	<b>1</b>	<b>1</b>	<b>0</b>	<b>0</b>	<b>0</b>	<b>12</b>	<b>6</b>	<b>6</b>	<b>2</b>	<b>1%</b>
<b>Subtotal</b>	<b>1</b>	<b>1</b>	<b>0</b>	<b>0</b>	<b>53</b>	<b>57</b>	<b>7</b>	<b>4</b>	<b>4</b>	<b>5</b>	<b>2</b>	<b>2</b>	<b>136</b>	<b>69</b>	<b>66</b>	<b>22</b>	<b>16%</b>

Notes: The number of full time faculty includes those with administrative rank, such as Provost Office, Library, and Developmental Programs



**Faculty Profile**  
**School, Rank, Tenure, Ethnicity and Gender**  
**2017-2018**

*Excludes those with administrative ranking*

School of Arts & Letters																		
Headcount	Black, Non Hispanic		American Indian / Alaskan Native		White, Non Hispanic		Hispanic		Asian/Pacific Islander		Other/Unknown		Total	Total	Total	%	%	
	M	F	M	F	M	F	M	F	M	F	M	F	Total	Female	Male	Minority	Minority Total University	Minority to School
<b>Arts &amp; Letters</b>																		
<b>Professor</b>																		
Tenured					5	5							10	5	5	0	0%	0%
Tenured track													0	0	0	0	0%	0%
Non Tenured													0	0	0	0	0%	0%
<b>Total</b>	<b>0</b>	<b>0</b>	<b>0</b>	<b>0</b>	<b>5</b>	<b>5</b>	<b>0</b>	<b>0</b>	<b>0</b>	<b>0</b>	<b>0</b>	<b>0</b>	<b>10</b>	<b>5</b>	<b>5</b>	<b>0</b>	<b>0%</b>	<b>0%</b>
<b>Arts &amp; Letters</b>																		
<b>Associate Professor</b>																		
Tenured					5	10				1			16	11	5	1	1%	3%
Tenured track													0	0	0	0	0%	0%
Non Tenured													0	0	0	0	0%	0%
<b>Total</b>	<b>0</b>	<b>0</b>	<b>0</b>	<b>0</b>	<b>5</b>	<b>10</b>	<b>0</b>	<b>0</b>	<b>0</b>	<b>1</b>	<b>0</b>	<b>0</b>	<b>16</b>	<b>11</b>	<b>5</b>	<b>1</b>	<b>1%</b>	<b>3%</b>
<b>Arts &amp; Letters</b>																		
<b>Assistant Professor</b>																		
Tenured													0	0	0	0	0%	0%
Tenured track		1			2								3	1	2	1	1%	3%
Non Tenured						1							1	1	0	0	0%	0%
<b>Total</b>	<b>0</b>	<b>1</b>	<b>0</b>	<b>0</b>	<b>2</b>	<b>1</b>	<b>0</b>	<b>0</b>	<b>0</b>	<b>0</b>	<b>0</b>	<b>0</b>	<b>4</b>	<b>2</b>	<b>2</b>	<b>1</b>	<b>1%</b>	<b>3%</b>
<b>Arts &amp; Letters</b>																		
<b>Instructor</b>																		
Tenured													0	0	0	0	0%	0%
Tenured track													0	0	0	0	0%	0%
Non Tenured					2	1							3	1	2	0	0%	0%
<b>Total</b>	<b>0</b>	<b>0</b>	<b>0</b>	<b>0</b>	<b>2</b>	<b>1</b>	<b>0</b>	<b>0</b>	<b>0</b>	<b>0</b>	<b>0</b>	<b>0</b>	<b>3</b>	<b>1</b>	<b>2</b>	<b>0</b>	<b>0%</b>	<b>0%</b>
<b>Subtotal</b>	<b>0</b>	<b>1</b>	<b>0</b>	<b>0</b>	<b>14</b>	<b>17</b>	<b>0</b>	<b>0</b>	<b>0</b>	<b>1</b>	<b>0</b>	<b>0</b>	<b>33</b>	<b>19</b>	<b>14</b>	<b>2</b>	<b>1%</b>	<b>6%</b>



**Faculty Profile**  
**School, Rank, Tenure, Ethnicity and Gender**  
**2017-2018**

*Excludes those with administrative ranking*

**School of Business**

Headcount	Black, Non Hispanic		American Indian / Alaskan Native		White, Non Hispanic		Hispanic		Asian/Pacific Islander		Other/Unknown		Total	Total	Total	%	%	
	M	F	M	F	M	F	M	F	M	F	M	F	Total	Female	Male	Minority	Minority Total University	Minority to School
<b>Business Professor</b>																		
Tenured	1				1		1		1				4	0	4	3	2%	18%
Tenured track													0	0	0	0	0%	0%
Non Tenured													0	0	0	0	0%	0%
<b>Total</b>	<b>1</b>	<b>0</b>	<b>0</b>	<b>0</b>	<b>1</b>	<b>0</b>	<b>1</b>	<b>0</b>	<b>1</b>	<b>0</b>	<b>0</b>	<b>0</b>	<b>4</b>	<b>0</b>	<b>4</b>	<b>3</b>	<b>2%</b>	<b>18%</b>
<b>Business Associate Professor</b>																		
Tenured					3	2			1				6	2	4	1	1%	6%
Tenured track													0	0	0	0	0%	0%
Non Tenured									1				1	1	0	1	1%	6%
<b>Total</b>	<b>0</b>	<b>0</b>	<b>0</b>	<b>0</b>	<b>3</b>	<b>2</b>	<b>0</b>	<b>0</b>	<b>1</b>	<b>1</b>	<b>0</b>	<b>0</b>	<b>7</b>	<b>3</b>	<b>4</b>	<b>2</b>	<b>1%</b>	<b>12%</b>
<b>Business Assistant Professor</b>																		
Tenured													0	0	0	0	0%	0%
Tenured track					1	3			1				5	4	1	1	1%	6%
Non Tenured						1							1	1	0	0	0%	0%
<b>Total</b>	<b>0</b>	<b>0</b>	<b>0</b>	<b>0</b>	<b>1</b>	<b>4</b>	<b>0</b>	<b>0</b>	<b>0</b>	<b>1</b>	<b>0</b>	<b>0</b>	<b>6</b>	<b>5</b>	<b>1</b>	<b>1</b>	<b>1%</b>	<b>6%</b>
<b>Business Instructor</b>																		
Tenured													0	0	0	0	0%	0%
Tenured track													0	0	0	0	0%	0%
Non Tenured													0	0	0	0	0%	0%
<b>Total</b>	<b>0</b>	<b>0</b>	<b>0</b>	<b>0</b>	<b>0</b>	<b>0</b>	<b>0</b>	<b>0</b>	<b>0</b>	<b>0</b>	<b>0</b>	<b>0</b>	<b>0</b>	<b>0</b>	<b>0</b>	<b>0</b>	<b>0%</b>	<b>0%</b>
<b>Subtotal</b>	<b>1</b>	<b>0</b>	<b>0</b>	<b>0</b>	<b>5</b>	<b>6</b>	<b>1</b>	<b>0</b>	<b>2</b>	<b>2</b>	<b>0</b>	<b>0</b>	<b>17</b>	<b>8</b>	<b>9</b>	<b>6</b>	<b>4%</b>	<b>35%</b>



**Faculty Profile**  
**School, Rank, Tenure, Ethnicity and Gender**  
**2017-2018**

*Excludes those with administrative ranking*

**School of Education**

Headcount	Black, Non Hispanic		American Indian / Alaskan Native		White, Non Hispanic		Hispanic		Asian/Pacific Islander		Other/Unknown		Total	Total	Total	%	%	
	M	F	M	F	M	F	M	F	M	F	M	F	Total	Female	Male	Minority	Minority Total University	Minority to School
<b>Education Professor</b>																		
Tenured					1	4	1	1					7	5	2	2	1%	10%
Tenured track													0	0	0	0	0%	0%
Non Tenured													0	0	0	0	0%	0%
<b>Total</b>	<b>0</b>	<b>0</b>	<b>0</b>	<b>0</b>	<b>1</b>	<b>4</b>	<b>1</b>	<b>1</b>	<b>0</b>	<b>0</b>	<b>0</b>	<b>0</b>	<b>7</b>	<b>5</b>	<b>2</b>	<b>2</b>	<b>1%</b>	<b>10%</b>
<b>Education Associate Professor</b>																		
Tenured					2	2		1					5	3	2	1	1%	5%
Tenured track						1							1	1	0	0	0%	0%
Non Tenured													0	0	0	0	0%	0%
<b>Total</b>	<b>0</b>	<b>0</b>	<b>0</b>	<b>0</b>	<b>2</b>	<b>3</b>	<b>0</b>	<b>2</b>	<b>0</b>	<b>0</b>	<b>0</b>	<b>0</b>	<b>7</b>	<b>5</b>	<b>2</b>	<b>2</b>	<b>1%</b>	<b>10%</b>
<b>Education Assistant Professor</b>																		
Tenured							1						1	1	0	0	0%	0%
Tenured track					2	2							4	2	2	0	0%	0%
Non Tenured												1	1	1	0	0	0%	0%
<b>Total</b>	<b>0</b>	<b>0</b>	<b>0</b>	<b>0</b>	<b>2</b>	<b>3</b>	<b>0</b>	<b>0</b>	<b>0</b>	<b>0</b>	<b>0</b>	<b>1</b>	<b>6</b>	<b>4</b>	<b>2</b>	<b>0</b>	<b>0%</b>	<b>0%</b>
<b>Education Instructor</b>																		
Tenured													0	0	0	0	0%	0%
Tenured track													0	0	0	0	0%	0%
Non Tenured													0	0	0	0	0%	0%
<b>Total</b>	<b>0</b>	<b>0</b>	<b>0</b>	<b>0</b>	<b>0</b>	<b>0</b>	<b>0</b>	<b>0</b>	<b>0</b>	<b>0</b>	<b>0</b>	<b>0</b>	<b>0</b>	<b>0</b>	<b>0</b>	<b>0</b>	<b>0%</b>	<b>0%</b>
<b>Subtotal</b>	<b>0</b>	<b>0</b>	<b>0</b>	<b>0</b>	<b>5</b>	<b>10</b>	<b>1</b>	<b>3</b>	<b>0</b>	<b>0</b>	<b>0</b>	<b>1</b>	<b>20</b>	<b>14</b>	<b>6</b>	<b>4</b>	<b>3%</b>	<b>20%</b>





**Faculty Profile**  
**School, Rank, Tenure, Ethnicity and Gender**  
**2017-2018**

*Excludes those with administrative ranking*

**School of Health Professions**

Headcount	Black, Non Hispanic		American Indian / Alaskan Native		White, Non Hispanic		Hispanic		Asian/Pacific Islander		Other/Unknown		Total	Total	Total	%	%	
	M	F	M	F	M	F	M	F	M	F	M	F	Total	Female	Male	Minority	Minority Total University	Minority to School
<b>GPNA / DNAP</b>																		
<b>Professor</b>																		
Tenured					1	1							0	0	0	0	0%	0%
Tenured track													0	0	0	0	0%	0%
Non Tenured					2								2	0	2	0	0%	0%
<b>Total</b>	<b>0</b>	<b>0</b>	<b>0</b>	<b>0</b>	<b>3</b>	<b>1</b>	<b>0</b>	<b>0</b>	<b>0</b>	<b>0</b>	<b>0</b>	<b>0</b>	<b>4</b>	<b>1</b>	<b>3</b>	<b>0</b>	<b>0%</b>	<b>0%</b>
<b>GPNA / DNAP</b>																		
<b>Associate Professor</b>																		
Tenured					2	1							3	1	2	0	0%	0%
Tenured track													0	0	0	0	0%	0%
Non Tenured							2	1					3	2	1	1	1%	5%
<b>Total</b>	<b>0</b>	<b>0</b>	<b>0</b>	<b>0</b>	<b>2</b>	<b>3</b>	<b>1</b>	<b>0</b>	<b>0</b>	<b>0</b>	<b>0</b>	<b>0</b>	<b>6</b>	<b>3</b>	<b>3</b>	<b>1</b>	<b>1%</b>	<b>5%</b>
<b>GPNA / DNAP</b>																		
<b>Assistant Professor</b>																		
Tenured													0	0	0	0	0%	0%
Tenured track					1	3							4	3	1	0	0%	0%
Non Tenured					1	1							2	1	1	0	0%	0%
<b>Total</b>	<b>0</b>	<b>0</b>	<b>0</b>	<b>0</b>	<b>2</b>	<b>4</b>	<b>0</b>	<b>0</b>	<b>0</b>	<b>0</b>	<b>0</b>	<b>0</b>	<b>6</b>	<b>4</b>	<b>2</b>	<b>0</b>	<b>0%</b>	<b>0%</b>
<b>GPNA / DNAP</b>																		
<b>Instructor</b>																		
Tenured													0	0	0	0	0%	0%
Tenured track													0	0	0	0	0%	0%
Non Tenured						2			1				3	2	1	1	1%	5%
<b>Total</b>	<b>0</b>	<b>0</b>	<b>0</b>	<b>0</b>	<b>0</b>	<b>2</b>	<b>0</b>	<b>0</b>	<b>1</b>	<b>0</b>	<b>0</b>	<b>0</b>	<b>3</b>	<b>2</b>	<b>1</b>	<b>1</b>	<b>1%</b>	<b>5%</b>
<b>Subtotal</b>	<b>0</b>	<b>0</b>	<b>0</b>	<b>0</b>	<b>7</b>	<b>10</b>	<b>1</b>	<b>0</b>	<b>1</b>	<b>0</b>	<b>0</b>	<b>0</b>	<b>19</b>	<b>10</b>	<b>9</b>	<b>2</b>	<b>1%</b>	<b>11%</b>



**Faculty Profile**  
**School, Rank, Tenure, Ethnicity and Gender**  
**2017-2018**

*Excludes those with administrative ranking*

**School of Natural & Social Sciences**

Headcount	Black, Non Hispanic		American Indian / Alaskan Native		White, Non Hispanic		Hispanic		Asian/Pacific Islander		Other/Unknown		Total	Total	Total	%	%		
	M	F	M	F	M	F	M	F	M	F	M	F	Total	Female	Male	Minority	Minority Total University	Minority to School	
<b>Natural &amp; Social Science Professor</b>																			
Tenured					5	4	1		1			1		12	4	8	2	1%	6%
Tenured track														0	0	0	0	0%	0%
Non Tenured														0	0	0	0	0%	0%
<b>Total</b>	<b>0</b>	<b>0</b>	<b>0</b>	<b>0</b>	<b>5</b>	<b>4</b>	<b>1</b>	<b>0</b>	<b>1</b>	<b>0</b>	<b>1</b>	<b>0</b>	<b>12</b>	<b>4</b>	<b>8</b>	<b>2</b>	<b>1%</b>	<b>6%</b>	
<b>Natural &amp; Social Science Associate Professor</b>																			
Tenured					3	3				1		1		8	4	4	1	1%	3%
Tenured track														0	0	0	0	0%	0%
Non Tenured														0	0	0	0	0%	0%
<b>Total</b>	<b>0</b>	<b>0</b>	<b>0</b>	<b>0</b>	<b>3</b>	<b>3</b>	<b>0</b>	<b>0</b>	<b>0</b>	<b>1</b>	<b>1</b>	<b>0</b>	<b>8</b>	<b>4</b>	<b>4</b>	<b>1</b>	<b>1%</b>	<b>3%</b>	
<b>Natural &amp; Social Science Assistant Professor</b>																			
Tenured														0	0	0	0	0%	0%
Tenured track					6	1	3			1				11	2	9	4	3%	12%
Non Tenured					2									2	0	2	0	0%	0%
<b>Total</b>	<b>0</b>	<b>0</b>	<b>0</b>	<b>0</b>	<b>8</b>	<b>1</b>	<b>3</b>	<b>0</b>	<b>0</b>	<b>1</b>	<b>0</b>	<b>0</b>	<b>13</b>	<b>2</b>	<b>11</b>	<b>4</b>	<b>3%</b>	<b>12%</b>	
<b>Natural &amp; Social Science Instructor</b>																			
Tenured														0	0	0	0	0%	0%
Tenured track														0	0	0	0	0%	0%
Non Tenured														0	0	0	0	0%	0%
<b>Total</b>	<b>0</b>	<b>0</b>	<b>0</b>	<b>0</b>	<b>0</b>	<b>0</b>	<b>0</b>	<b>0</b>	<b>0</b>	<b>0</b>	<b>0</b>	<b>0</b>	<b>0</b>	<b>0</b>	<b>0</b>	<b>0</b>	<b>0</b>	<b>0%</b>	<b>0%</b>
<b>Subtotal</b>	<b>0</b>	<b>0</b>	<b>0</b>	<b>0</b>	<b>16</b>	<b>8</b>	<b>4</b>	<b>0</b>	<b>1</b>	<b>2</b>	<b>2</b>	<b>0</b>	<b>33</b>	<b>10</b>	<b>23</b>	<b>7</b>	<b>5%</b>	<b>21%</b>	



# Faculty Profile

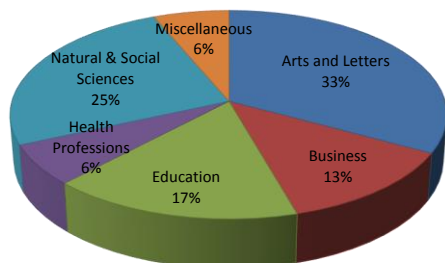
## School and Tenure

### Fall 2017

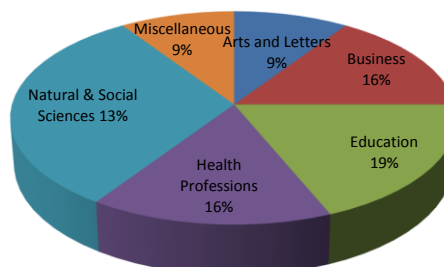
Faculty employed on a full-time basis								
School	Tenured	%	Tenured track	%	Non Tenured	%	Total # of Faculty	Total %
Arts and Letters	26	33%	3	9%	4	16%	33	24%
Business	10	13%	5	16%	2	8%	17	13%
Education	13	16%	6	19%	1	4%	20	15%
Health Professions	5	6%	5	16%	9	36%	19	14%
Natural & Social Sciences	20	25%	10	31%	3	12%	33	24%
Miscellaneous	5	6%	3	9%	6	24%	14	10%
<b>Total University</b>	<b>79</b>	<b>100%</b>	<b>32</b>	<b>100%</b>	<b>25</b>	<b>100%</b>	<b>136</b>	<b>100%</b>

Miscellaneous: full time faculty with administrative rank, such as Provost Office, Library, and Developmental Programs

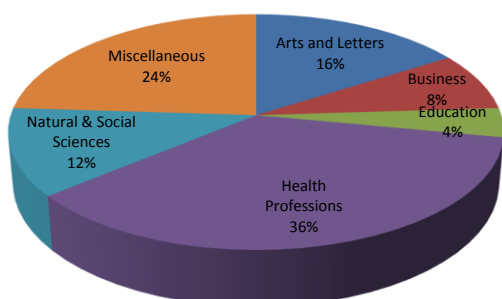
Tenured Faculty % by School



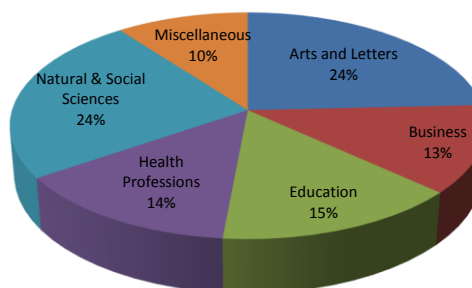
Tenured Track Faculty % by School



Non Tenured Faculty % by School



Total Faculty % by School



## Faculty by School, Tenure and Gender Fall 2017

Faculty status includes all individuals employed on a full-time basis

School	Tenured		Tenured track		Non Tenured		Total # of Faculty
	Male	Female	Male	Female	Male	Female	
<b>Arts and Letters</b>							
Total	10	14	1	3	3	2	33
<b>Business</b>							
Total	8	2	0	5	0	1	16
<b>Education</b>							
Total	6	12	3	6	1	0	28
<b>GPNA</b>							
Total	1	1	0	1	4	4	11
<b>Natural &amp; Social Science</b>							
Total	10	8	13	2	0	1	34
<b>Miscellaneous</b>							
Total	3	2	0	1	2	5	13
<b>Total University</b>	<b>38</b>	<b>39</b>	<b>17</b>	<b>18</b>	<b>10</b>	<b>13</b>	<b>135</b>



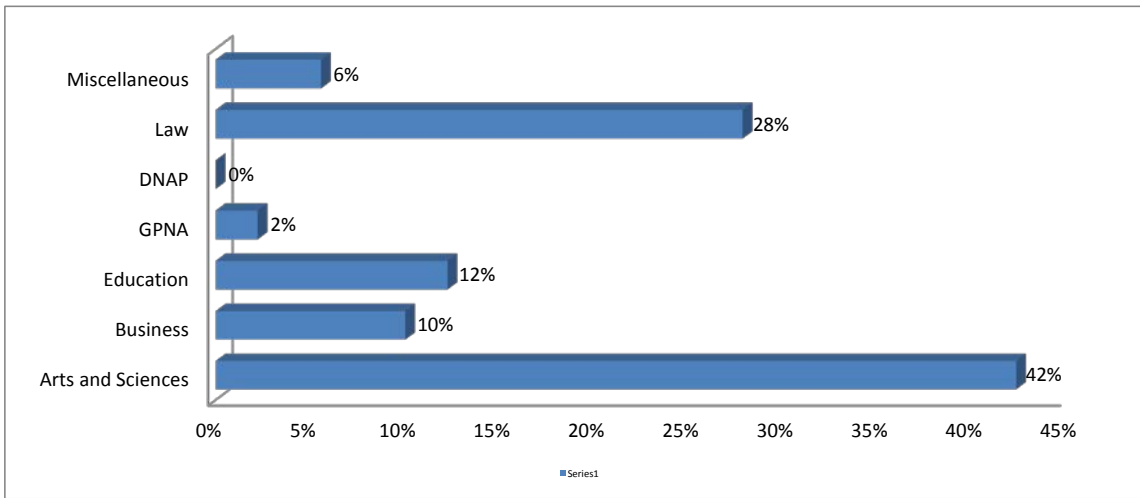
School/Dept	Tenured		Non-Tenured, on track		Non-Tenured, not on track		Total
	M	F	M	F	M	F	# of Faculty
<b>Arts and Sciences</b>							
Art	0	0	0	0	0	0	0
Biology	0	0	0	0	0	0	0
Chemistry	0	0	0	0	0	0	0
Dean	0	0	0	0	0	0	0
Humanities	0	0	0	0	0	0	0
Language and Literature	0	0	0	0	0	0	0
Mass Communications	0	0	0	0	0	0	0
Math Computers and Sciences	0	0	0	0	0	0	0
Music	0	0	0	0	0	0	0
Philosophy and Religion	0	0	0	0	0	0	0
Physics and Geology	0	0	0	0	0	0	0
Psychology	0	0	0	0	0	0	0
Social Sciences	0	0	0	0	0	0	0
Theatre	0	0	0	0	0	0	0
<b>Total</b>	<b>0</b>	<b>0</b>	<b>0</b>	<b>0</b>	<b>0</b>	<b>0</b>	<b>0</b>
<b>Business</b>							
Business and Operating	0	0	0	0	0	0	0
<b>Total</b>	<b>0</b>	<b>0</b>	<b>0</b>	<b>0</b>	<b>0</b>	<b>0</b>	<b>0</b>
<b>Education</b>							
Dean Education	0	0	0	0	0	0	0
Doctor of Education	0	0	0	0	0	0	0
Exercise & Sports Studies	0	0	0	0	0	0	0
Graduate Counseling	0	0	0	0	0	0	0
Graduate Education	0	0	0	0	0	0	0
Kinesiology	0	0	0	0	0	0	0
Undergraduate Education	0	0	0	0	0	0	0
<b>Total</b>	<b>0</b>	<b>0</b>	<b>0</b>	<b>0</b>	<b>0</b>	<b>0</b>	<b>0</b>
<b>GPNA</b>							
Health Science	0	0	0	0	0	0	0
<b>Total</b>	<b>0</b>	<b>0</b>	<b>0</b>	<b>0</b>	<b>0</b>	<b>0</b>	<b>0</b>
<b>DNAP</b>							
Doctoral Nurse Anesthesia	0	0	0	0	0	0	0
<b>Total</b>	<b>0</b>	<b>0</b>	<b>0</b>	<b>0</b>	<b>0</b>	<b>0</b>	<b>0</b>
<b>Miscellaneous</b>							
Provost	0	0	0	0	0	0	0
Main Campus Library	0	0	0	0	0	0	0
Developmental Programs	0	0	0	0	0	0	0
<b>Total</b>	<b>0</b>	<b>0</b>	<b>0</b>	<b>0</b>	<b>0</b>	<b>0</b>	<b>0</b>
<b>Total University</b>	<b>0</b>	<b>0</b>	<b>0</b>	<b>0</b>	<b>0</b>	<b>0</b>	<b>0</b>

Notes: The number of full time faculty includes those with administrative rank, such as Provost Office, Library, and Developmental Programs



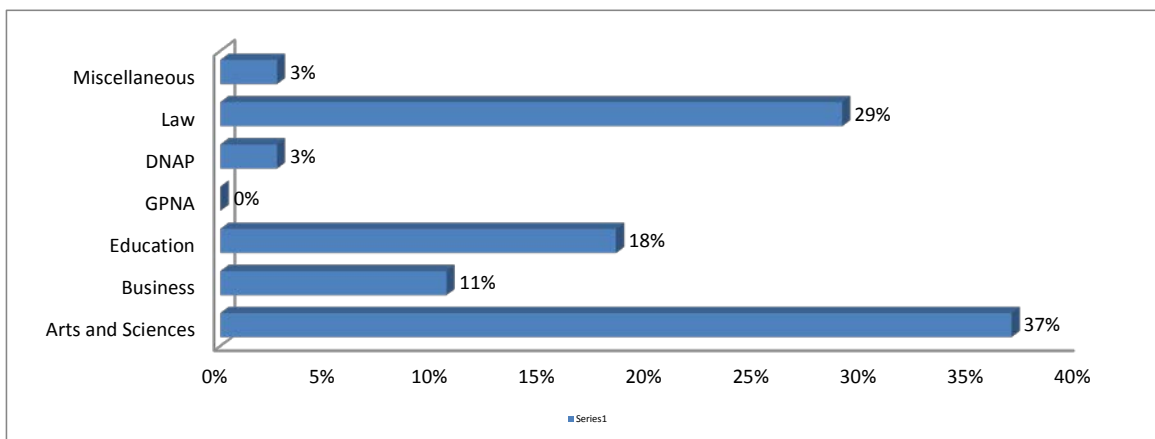
Percentage of Full-Time Faculty with Tenure By School

	2008
Arts and Sciences	42%
Business	10%
Education	12%
GPNA	2%
DNAP	0%
Law	28%
Miscellaneous	6%
<b>Total University</b>	<b>100%</b>



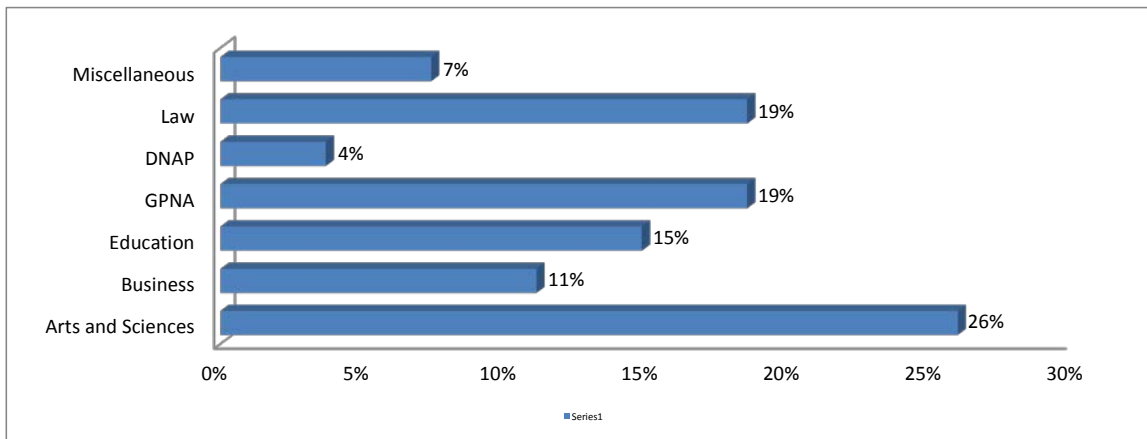
Percentage of Full-Time Faculty with Non-Tenure, On Track By School

	2008
Arts and Sciences	37%
Business	11%
Education	18%
GPNA	0%
DNAP	3%
Law	29%
Miscellaneous	3%
<b>Total University</b>	<b>100%</b>



Percentage of Full-Time Faculty with Non-Tenure, Not On Track By School

2008	
Arts and Sciences	26%
Business	11%
Education	15%
GPNA	19%
DNAP	4%
Law	19%
Miscellaneous	7%
<b>Total University</b>	<b>100%</b>



# Faculty by School, Department, and Tenure Fall 2017

*Faculty status includes all individuals employed on a full-time basis*

School/Dept	# of faculty	Tenured	% Tenured
<b>Arts and Letters</b>			
Dean	1	1	100%
Language and Literature	8	8	100%
Mass Communications	6	4	67%
Music	5	4	80%
Philosophy and Religion	7	6	86%
Theatre	6	3	50%
<b>Total</b>	<b>33</b>	<b>26</b>	<b>79%</b>
<b>Business</b>			
Dean	1	1	100%
Business and Operating	16	9	56%
<b>Total</b>	<b>17</b>	<b>10</b>	<b>59%</b>
<b>Education</b>			
Dean	1	1	100%
Undergraduate Education	8	6	75%
Kinesiology	5	2	40%
Doctorate Education	4	2	50%
Graduate Education	2	2	100%
<b>Total</b>	<b>20</b>	<b>13</b>	<b>65%</b>
<b>Health Professions</b>			
Dean	1	0	0%
Doctoral Nurse Anesthesia	3	0	0%
Graduate Counseling	7	4	57%
Health Science	8	1	13%
<b>Total</b>	<b>19</b>	<b>5</b>	<b>26%</b>
<b>Natural &amp; Social Science</b>			
Dean	1	1	100%
Biology	5	3	60%
Chemistry	4	2	50%
History	3	2	67%
Math Computers & Sciences	7	3	43%
Paralegal Studies	1	0	0%
Psychology	5	4	80%
Social Sciences	7	5	71%
<b>Total</b>	<b>33</b>	<b>20</b>	<b>61%</b>
<b>Miscellaneous</b>			
Provost	2	2	100%
Main Campus Library	7	3	43%
Developmental Programs	5	0	0%
<b>Total</b>	<b>14</b>	<b>5</b>	<b>36%</b>
<b>Total University</b>	<b>136</b>	<b>79</b>	<b>58%</b>

Notes: The number of full time faculty includes those with administrative rank, such as Provost Office, Library, and Developmental Programs





## Staff at Texas Wesleyan University 2017-2018

### Occupational Category

	Full-Time	Part-Time	Total
<b>Male</b>			
Advertising and Promotions Managers	1		1
Athletic Trainers	3		3
Audio and Video Equipment Technicians		1	1
Biological Scientists, All Other	1		1
Bus Drivers, School or Special Client		1	1
Camera Operators, Television, Video, and Motion Picture	1		1
Chief Executives	1		1
Coaches and Scouts	22	4	26
Compliance Officers	1		1
Computer and Information Systems Managers	4		4
Computer Network Architects	2		2
Computer Network Support Specialists	1		1
Computer Systems Analysts	2		2
Computer User Support Specialists	6		6
Education Administrators, All Other	1		1
Education Administrators, Postsecondary	9		9
Education, Training, and Library Workers, All Other	2		2
Educational, Guidance, School, and Vocational Counselors	10		10
Entertainment Attendants and Related Workers, All Other	1		1
Financial Analysts	1		1
Financial Specialists, All Other	1		1
Fundraisers	2		2
General and Operations Managers	2		2
Grounds Maintenance Workers, All Other	1		1
Heating, Air Conditioning, and Refrigeration Mechanics and Installers	2		2
Human Resources Specialists	1		1
Information Security Analysts	1		1
Library Assistants, Clerical		3	3
Library Technicians		1	1
Lifeguards, Ski Patrol, and Other Recreational Protective Service		1	1
Mail Clerks and Mail Machine Operators, Except Postal Service	1		1
Maintenance and Repair Workers, General	9		9
Marketing Managers	2		2
Meeting, Convention, and Event Planners	1		1
Network and Computer Systems Administrators	5		5
Office and Administrative Support Workers, All Other	2		2
Painters, Construction and Maintenance	1		1
Physical Scientists, All Other	1		1
Postmasters and Mail Superintendents	1		1
Public Relations and Fundraising Managers	2		2
Public Relations Specialists	2		2
Secretaries and Administrative Assistants, Except Legal, Medical, and Execu	4	1	5
Security Guards	3		3
Software Developers, Applications	1		1
Web Developers	1		1
<b>Total Male</b>	<b>115</b>	<b>12</b>	<b>127</b>



	Full-Time	Part-Time	Total
<b>Female</b>			
Accountants and Auditors	3		3
Administrative Services Managers	1		1
Art Directors	1		1
Athletic Trainers	2		2
Bookkeeping, Accounting, and Auditing Clerks	1		1
Cashiers	2		2
Coaches and Scouts	9		9
Computer and Information Systems Managers	3		3
Computer Network Support Specialists	1		1
Computer Systems Analysts	2		2
Education Administrators, Postsecondary	8		8
Education, Training, and Library Workers, All Other	16	1	17
Educational, Guidance, School, and Vocational Counselors	10	1	11
Executive Secretaries and Executive Administrative Assistants	6		6
File Clerks	1		1
Financial Managers	4		4
Food Preparation Workers		1	1
Fundraisers	5		5
General and Operations Managers	1		1
Human Resources Assistants, Except Payroll and Timekeeping	1		1
Human Resources Managers	2		2
Human Resources Specialists	1		1
Information and Record Clerks, All Other	4		4
Instructional Coordinators	5		5
Library Assistants, Clerical	3	2	5
Library Technicians		1	1
Licensed Practical and Licensed Vocational Nurses	1		1
Management Analysts	1		1
Managers, All Other	1		1
Market Research Analysts and Marketing Specialists	1		1
Marketing Managers	3		3
Media and Communication Workers, All Other	1		1
Office and Administrative Support Workers, All Other	8	1	9
Office Clerks, General	1		1
Public Relations and Fundraising Managers	5		5
Public Relations Specialists	2		2
Purchasing Managers	1		1
Receptionists and Information Clerks	1		1
Residential Advisors	3		3
Secretaries and Administrative Assistants, Except Legal, Medical, and Execu	31		31
Sociology Teachers, Postsecondary	1		1
Training and Development Managers	1		1
Web Developers	1		1
<b>Total Female</b>	<b>155</b>	<b>7</b>	<b>162</b>



	Full-Time	Part-Time	Total
<b>Combined</b>			
Accountants and Auditors	3		3
Administrative Services Managers	1		1
Advertising and Promotions Managers	1		1
Art Directors	1		1
Athletic Trainers	5		5
Audio and Video Equipment Technicians		1	1
Biological Scientists, All Other	1		1
Bookkeeping, Accounting, and Auditing Clerks	1		1
Bus Drivers, School or Special Client		1	1
Camera Operators, Television, Video, and Motion Picture	1		1
Cashiers	2		2
Chief Executives	1		1
Coaches and Scouts	31	4	35
Compliance Officers	1		1
Computer and Information Systems Managers	7		7
Computer Network Architects	2		2
Computer Network Support Specialists	2		2
Computer Systems Analysts	4		4
Computer User Support Specialists	6		6
Education Administrators, All Other	1		1
Education Administrators, Postsecondary	17		17
Education, Training, and Library Workers, All Other	18	1	19
Educational, Guidance, School, and Vocational Counselors	20	1	21
Entertainment Attendants and Related Workers, All Other	1		1
Executive Secretaries and Executive Administrative Assistants	6		6
File Clerks	1		1
Financial Analysts	1		1
Financial Managers	4		4
Financial Specialists, All Other	1		1
Food Preparation Workers		1	1
Fundraisers	7		7
General and Operations Managers	3		3
Grounds Maintenance Workers, All Other	1		1
Heating, Air Conditioning, and Refrigeration Mechanics and Installers	2		2
Human Resources Assistants, Except Payroll and Timekeeping	1		1
Human Resources Managers	2		2
Human Resources Specialists	2		2
Information and Record Clerks, All Other	4		4
Information Security Analysts	1		1
Instructional Coordinators	5		5
Library Assistants, Clerical	3	5	8
Library Technicians		2	2
Licensed Practical and Licensed Vocational Nurses	1		1
Lifeguards, Ski Patrol, and Other Recreational Protective Service		1	1
Mail Clerks and Mail Machine Operators, Except Postal Service	1		1
Maintenance and Repair Workers, General	9		9
Management Analysts	1		1
Managers, All Other	1		1
Market Research Analysts and Marketing Specialists	1		1
Marketing Managers	5		5
Media and Communication Workers, All Other	1		1
Meeting, Convention, and Event Planners	1		1
Network and Computer Systems Administrators	5		5
Office and Administrative Support Workers, All Other	10	1	11
Office Clerks, General	1		1
Painters, Construction and Maintenance	1		1
Physical Scientists, All Other	1		1
Postmasters and Mail Superintendents	1		1
Public Relations and Fundraising Managers	7		7
Public Relations Specialists	4		4
Purchasing Managers	1		1
Receptionists and Information Clerks	1		1
Residential Advisors	3		3
Secretaries and Administrative Assistants, Except Legal, Medical, and Execu	35	1	36
Security Guards	3		3
Sociology Teachers, Postsecondary	1		1
Software Developers, Applications	1		1
Training and Development Managers	1		1
Web Developers	2		2
<b>Total Female</b>	<b>270</b>	<b>19</b>	<b>289</b>



## Faculty and Staff Profile

### Total Employees Full Time and Part Time by Category

#### 2011-12 - 2017-18

<b>Full Time</b>	<b>2011-12</b>	<b>2012-13</b>	<b>2013-14</b>	<b>2014-15</b>	<b>2015-16</b>	<b>2016-17</b>	<b>2017-18</b>
Faculty	178	173	126	140	137	135	136
Tenured	92	99	77	85	75	77	79
Tenured Track	63	51	24	32	36	35	32
Non Tenured	23	23	25	23	26	23	25
Executive/Administrative/Managerial	55	50	41	43	58	19	17
Other Administrative	1	0	0	0	0	0	0
Other Professional	58	61	62	68	64	143	163
Secretarial/Clerical	69	69	52	53	47	59	61
Service/Maintenance	10	8	7	12	11	12	15
Skilled Craft	8	8	8	10	9	4	3
Technical/Paraprofessional	62	63	54	47	49	15	10
<b>Total Full Time</b>	<b>441</b>	<b>432</b>	<b>350</b>	<b>373</b>	<b>375</b>	<b>387</b>	<b>405</b>

<b>Part Time</b>	<b>2011-12</b>	<b>2011-12</b>	<b>2013-14</b>	<b>2014-15</b>	<b>2015-16</b>	<b>2016-17</b>	<b>2017-18</b>
Faculty	105	101	89	89	97	99	103
Tenured	0	0	0	0	0	0	0
Tenured Track	0	0	0	0	0	0	0
Non Tenured	105	101	89	89	97	99	103
Executive/Administrative/Managerial	2	1	1	1	0	0	0
Other Administrative	0	0	1	1	0	0	0
Other Professional	2	2	1	0	0	0	5
Secretarial/Clerical	3	3	4	6	2	1	2
Service/Maintenance	0	0	0	2	1	0	1
Skilled Craft	3	3	0	4	5	2	1
Technical/Paraprofessional	8	8	10	11	9	8	10
<b>Total Part Time</b>	<b>123</b>	<b>118</b>	<b>106</b>	<b>114</b>	<b>114</b>	<b>110</b>	<b>122</b>



**Faculty and Staff by Ethnicity**  
**Full Time and Part Time**  
**2011-12 - 2017-18**

<b>Full Time Faculty</b>	<b>2011-12</b>	<b>2012-13</b>	<b>2013-14</b>	<b>2014-15</b>	<b>2015-16</b>	<b>2016-17</b>	<b>2017-18</b>
American Indian/Alaska Native	1	1	1	1	1	0	0
Asian Or Pacific Islander	9	10	8	10	7	7	9
Black, Non-Hispanic	7	4	1	2	3	3	2
Hispanic	8	11	10	11	9	11	11
Other/Unknown/Multiple	3	4	1	3	3	4	4
White, Non-Hispanic	150	143	105	113	114	110	110
<b>Total Full Time</b>	<b>178</b>	<b>173</b>	<b>126</b>	<b>140</b>	<b>137</b>	<b>135</b>	<b>136</b>

<b>Part Time Faculty</b>	<b>2011-12</b>	<b>2012-13</b>	<b>2013-14</b>	<b>2014-15</b>	<b>2015-16</b>	<b>2016-17</b>	<b>2017-18</b>
American Indian/Alaska Native	0	0	0	0	0	0	0
Asian Or Pacific Islander	2	1	2	1	0	3	2
Black, Non-Hispanic	0	2	5	4	8	5	6
Hispanic	6	7	9	7	6	8	7
Other/Unknown/Multiple	3	5	3	5	6	6	4
White, Non-Hispanic	94	86	70	72	77	77	84
<b>Total Part Time</b>	<b>105</b>	<b>101</b>	<b>89</b>	<b>89</b>	<b>97</b>	<b>99</b>	<b>103</b>

<b>Full Time Staff</b>	<b>2011-12</b>	<b>2012-13</b>	<b>2013-14</b>	<b>2014-15</b>	<b>2015-16</b>	<b>2016-17</b>	<b>2017-18</b>
American Indian/Alaska Native	0	1	0	0	1	3	2
Asian Or Pacific Islander	5	6	7	7	4	6	9
Black, Non-Hispanic	29	32	32	36	31	38	39
Hispanic	34	29	28	27	27	38	44
Other/Unknown/Multiple	2	3	5	11	20	16	10
White, Non-Hispanic	193	188	152	152	155	151	166
<b>Total Full Time</b>	<b>263</b>	<b>259</b>	<b>224</b>	<b>233</b>	<b>238</b>	<b>252</b>	<b>270</b>

<b>Part Time Staff</b>	<b>2011-12</b>	<b>2012-13</b>	<b>2013-14</b>	<b>2014-15</b>	<b>2015-16</b>	<b>2016-17</b>	<b>2017-18</b>
American Indian/Alaska Native	0	0	0	0	0	0	0
Asian Or Pacific Islander	1	1	1	0	0	0	0
Black, Non-Hispanic	0	1	3	3	2	1	2
Hispanic	1	2	2	2	0	5	4
Other/Unknown/Multiple	0	0	0	2	1	0	0
White, Non-Hispanic	16	13	11	18	14	5	13
<b>Total Part Time</b>	<b>18</b>	<b>17</b>	<b>17</b>	<b>25</b>	<b>17</b>	<b>11</b>	<b>19</b>



# Faculty Profile

## Terminal and Degree Type

### 2017-18

Full time faculty with professional rank

### Terminal Degree

	# of faculty	% holding terminal degree
Professor	40	100%
Associate Professor	47	96%
Assistant Professor	37	84%
Instructor	12	58%
<b>Total</b>	<b>136</b>	<b>90%</b>

### Degree Type

	Doctoral / Professional	Master's	Baccalaureate	No Degree / Other	% Doctoral / Professional
Professor	37	3	0	0	93%
Associate Professor	42	5	0	0	89%
Assistant Professor	33	4	0	0	89%
Instructor	9	1	2	0	75%
<b>Total</b>	<b>121</b>	<b>13</b>	<b>2</b>	<b>0</b>	<b>89%</b>

