



# History

@ Texas Wesleyan  
UNIVERSITY

## Welcome to the Fall 2014 Semester!

### Pate Scholarships

This History Program at Texas Wesleyan University is pleased to announce the Pate Scholarship. These merit-based awards range from \$1,000-\$3,000 per academic year and may be renewed based on reapplication. Recipients are selected for their academic performance at the University and for their current and potential contribution to the University community and society. The program will be accepting applications from now through 15 April 2015 for the 2015/2016 academic year.

This scholarship is not based on financial need, but applicants must meet the following criteria:

- Sophomore standing by the beginning of 2015/2016 Academic Year
- Declared History Major
- Cumulative GPA of at least 3.0

Selection is also based on performance and attendance in History courses at Texas Wesleyan.

To apply, the student must submit the following:

- Application essay stating the reasons why they should receive this scholarship, including GPA and a summary of activities such as research and projects, service, and career goals
- Argumentative essay from a History course at Texas Wesleyan of at least 5 pages in length with cited source material

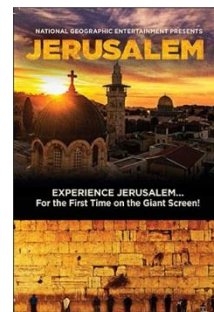
In evaluating candidates, the selection committee reviews the scholarship application essays and the argumentative essay.

Submit application materials by 15 April 2015 to  
Pate Scholarship  
Ashley Coen  
Department of Social Sciences  
Texas Wesleyan University  
1201 Wesleyan Street  
Fort Worth, TX 76105

The Pate Scholarship is named in honor of the late Fort Worth businessman and philanthropist A. M. Pate. "Aggie" Pate was involved in many history-related activities including the founding of the Pate Museum of Transportation and the Fort Worth Civil War Round Table. He was committed to encouraging research and scholarship and supported a number of institutions of higher learning including Texas Wesleyan.

### Jerusalem @ the Fort Worth Museum of Science & History

Jerusalem, sacred to half the people on earth; fought over more than any other place in history; conquered and destroyed, rebuilt and reinvented repeatedly over 5,000 years. This new giant screen film adventure immerses audiences in a spectacular cinematic journey—soaring high above the Holy



FORT WORTH MUSEUM  
SCIENCE AND HISTORY

Land and plunging deep into the vibrant Old City—so they can experience as never before the iconic sites cherished by billions. Jerusalem is a breathtaking new film that explores on a

grand scale the intersection of science, history and religion in this ancient, enigmatic place.

Watch for a Field Trip to the museum in late September organized by Wesleyan's own Omega-Zeta Chapter of Phi Alpha Theta.



### Reminders

October 20-24 – **Spring 2015 Advising** Begins

October 27-November 3 – **Spring 2015 Registration** Begins

Look for **changes to the txwes.edu History webpage**. The page will soon include guides to help you write book reviews and historical essays; analyze sources, and even think like a historian!

If you have suggestions for the program newsletter or website, direct them to [cohan@txwes.edu](mailto:cohan@txwes.edu).